

Technical Specifications

Foot Frame

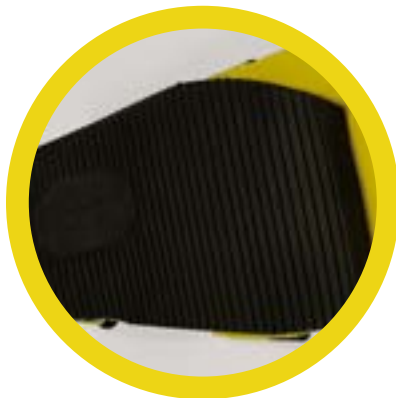
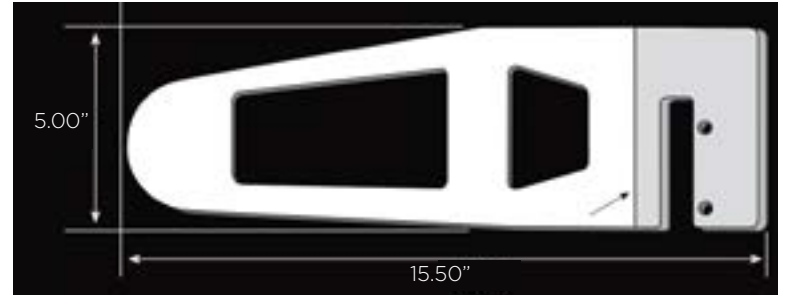
Color: Yellow (standard), Black, Tan, Olive Drab powder coat

Material: ASTM A514 Grade B High-Yield-Strength, Quenched and Tempered Alloy Steel Plate
ASTM A514 Grade B is a quenched and tempered alloy steel plate for structural applications requiring high yield strength combined with good formability and toughness. A514 Grade B has a minimum yield strength of 100 ksi [690 MPa].

0.2% YS ksi [MPa], min.	UTS ksi [MPa] 110 to 130 [760 to 895]	Elongation in 2" [50 mm], min. %	Reduction of Area, min. %	Brinell Hardness* 235 to 293
100 [690]		16	35	

Weight Capacity: CC02/CC13 (standard) 250lbs. user plus tools
CC02/CC13 HD 320 lbs. user plus tools

Flange Capacity: CC02 flange thickness up to 7/8"; CC13 flange thickness 1-17/8"



Work Sole

Color: Black

Material: VIBRAM® EVA compound
Oil-resistant, non-slip, self-cleaning

Thickness: 33 IR Fore, 54 IR Heel
(17mm Fore, 29mm Heel).



Webbing

Color: Black

Material (standard): Nylon, military, 1.75 inches, Mil-W-4088, Type 13U, Class 1A, breaking strength: 7000lb

Material (optional): Fire-resistant 100% Kevlar, 1.75 inches, 500 degree F/5 min, breaking strength: 9000lb



Lockdown Bolts

Color: Black

Material: Holo-Krome Socket Button Head Cap Screws, Alloy, Black Oxide

Specification requirements: Dimensions: ASME B18.3
Material & Mechanical: ASTM F835
Hardness: < 1/2" diameter is HRC 39 to 44.
> 1/2" diameter is HRC 37 to 44.

Quick Release Buckle

Color: Black

Material: Sheet steel, heat treated

Load: Min. Breaking Load: 4000 lbs / 18 kN

Meets: Ansi Z359.12-09, CSA Z259.12-11, Net weight: 4.5 oz. / 127 g.



Nosings

Color: Black

Material: MIL-A-46100 High-Hardness Armor (HHA) 0.25 in plate

Hardness: 477 to 534 BHN range.

Tensile properties: Tensile Strength: 260,000 psi (1792 MPa)
Yield Strength: 150,000 psi (1034 MPa)
Elongation: 13%



**Column™
Climber**

Specifications subject to change without prior notice